

GREENWAY PARK

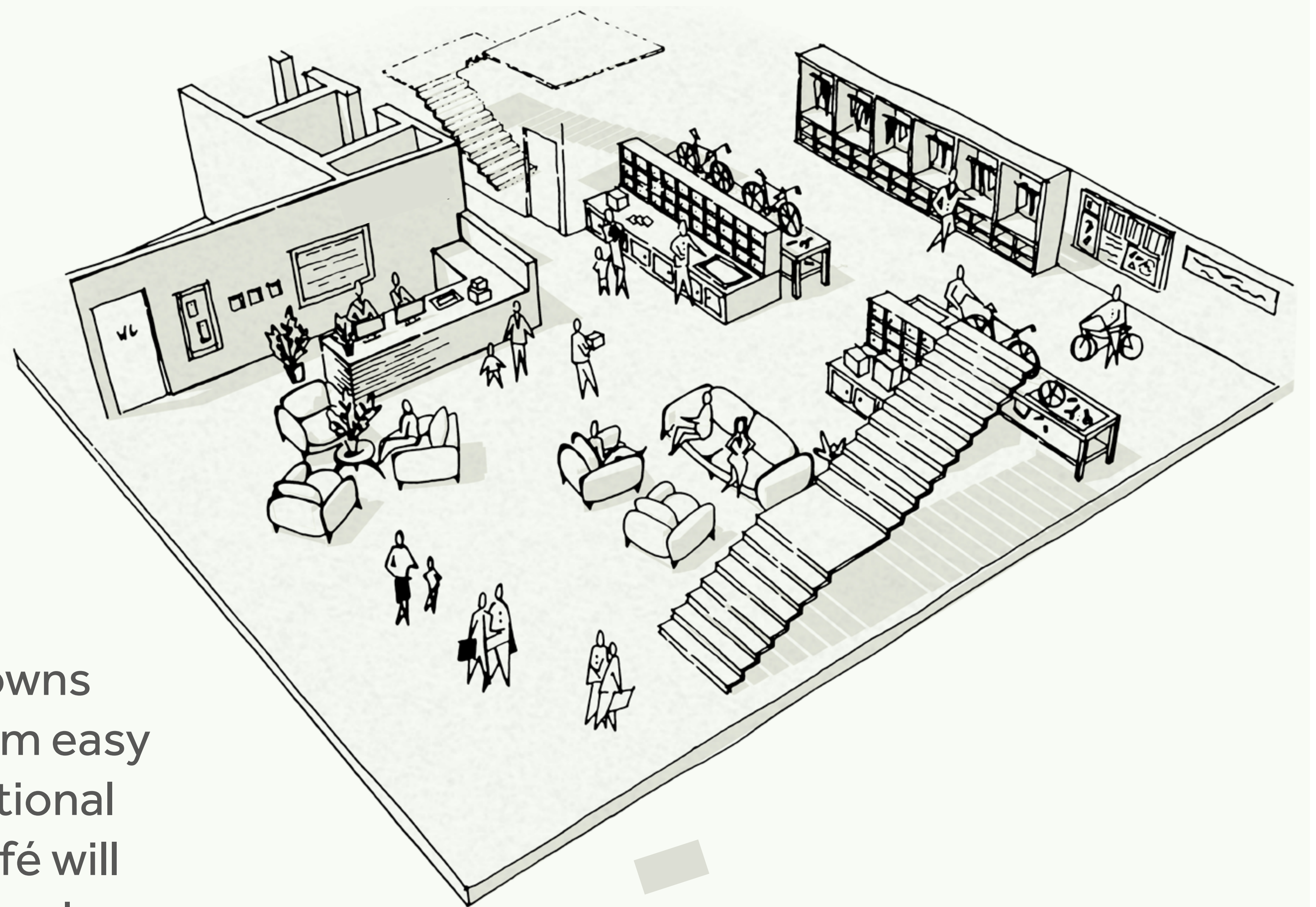
Hotel and Cycle Centre Proposal

Our proposal contains two separate but complementary elements:



The Hotel

The 80 bed hotel will provide visitors accommodation within the South Downs National Park. Visitors will benefit from easy access to the western part of the National Park and routes into Petersfield. A café will also be included to serve as a meeting place for locals and visitors.



The Cycling Centre

The cycling centre would offer both electronic and traditional bike retail and hire, repair and training services, and community cycling initiatives.

